

# Perfection in form and surface

Display & enclosure inspection  
with SpecGAGE3D

**ISRA**  
VISION  
3D-Shape 

# SpecGAGE3D: Form control and defect detection

## Surface inspection for mirroring components

Measuring mirroring or transparent surfaces is one of the most challenging tasks for optical metrology.

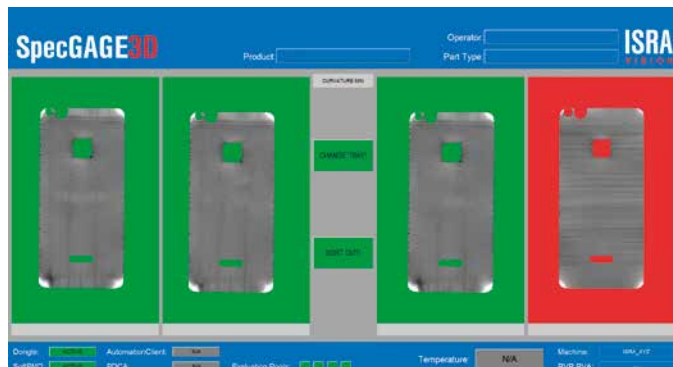
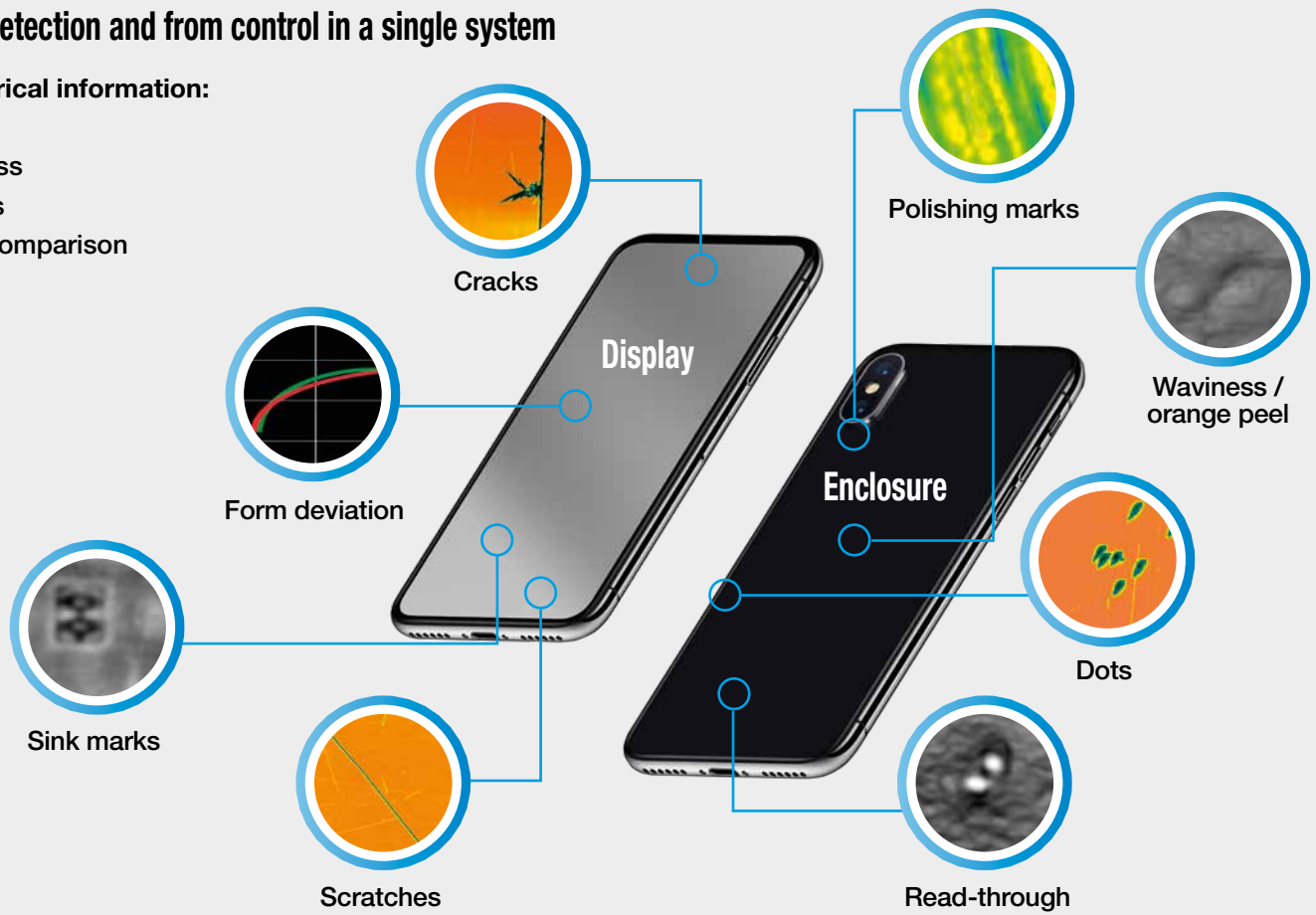
SpecGAGE3D is the fastest optical equipment available to measure highly reflective objects during manufacturing,

allowing for high precision and time-efficient 3D quality control. SpecGAGE3D inspects the entire surface of reflective and even curved parts in just a few seconds.

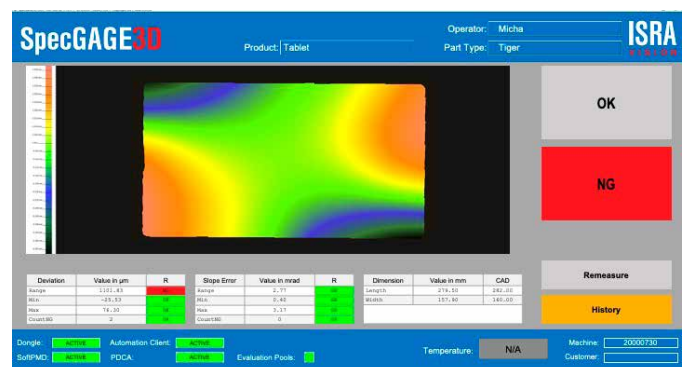
## Defect detection and from control in a single system

### Geometrical information:

- Shape
- Flatness
- Radius
- CAD comparison



Cosmetic inspection: Multi part measurement of several components in a tray

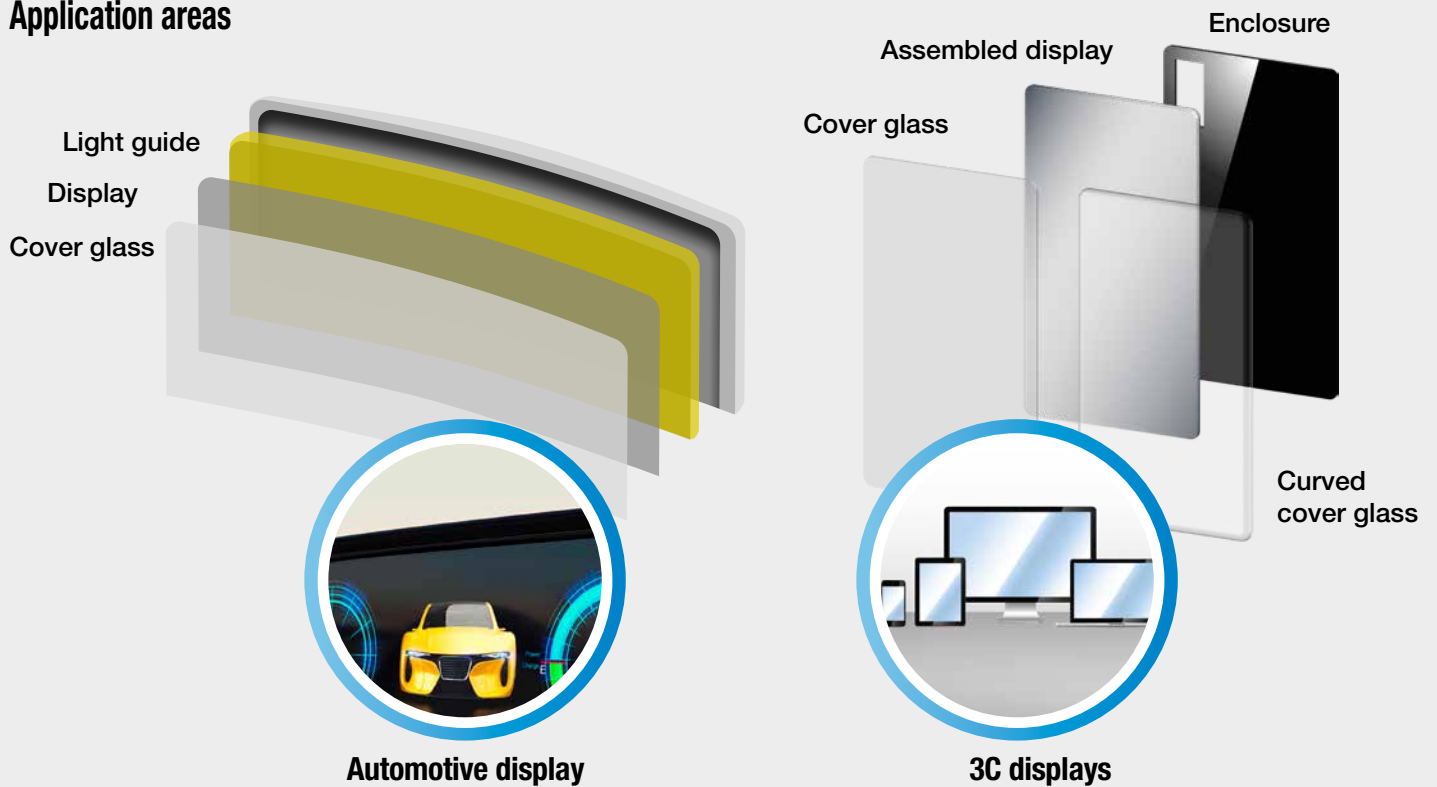


Form control: Single part measurement of large components Automatic CAD comparison

## Benefits

- Fast capturing of form and defects: Only one measuring tool for two measuring tasks
- 24/7 objective & constant control besides manual evaluation
- Traceability: Detect production deficiencies over time
- Fast and precise CAD comparison
- Flexibility in part sizes, shape, and variety

## Application areas



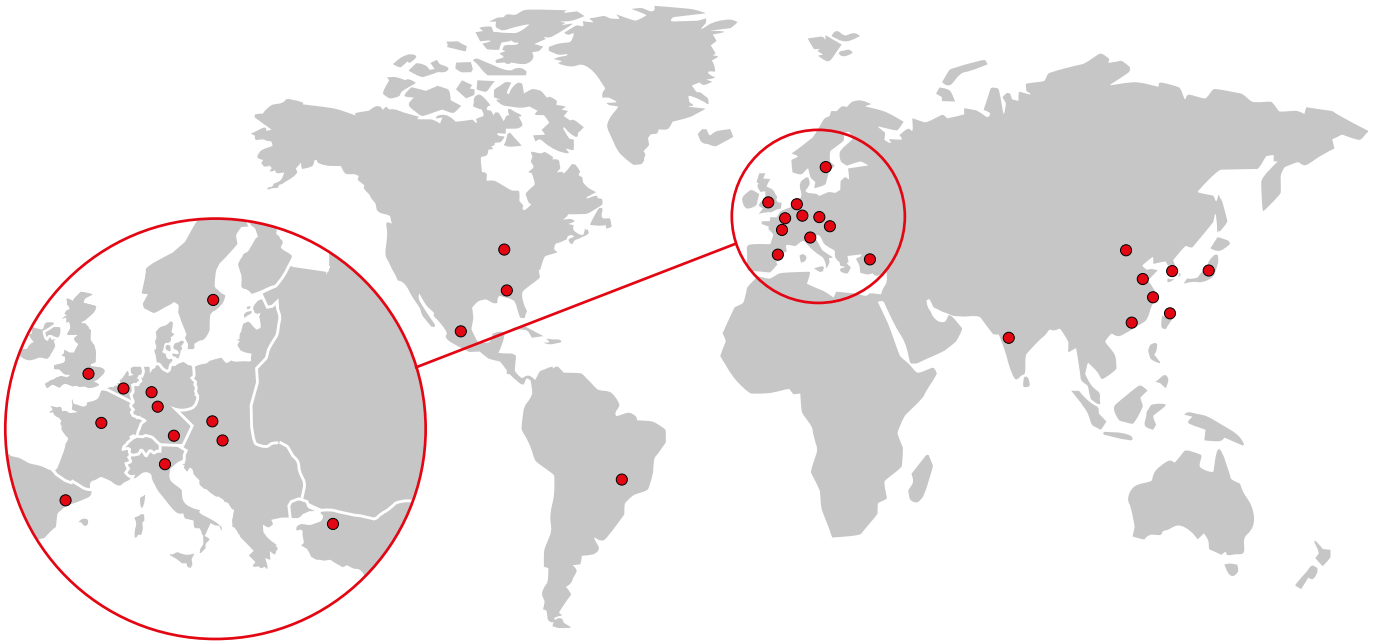
## System Configuration

Method	Phase-measuring deflectometry
Field of view (standard)	Up to 600 × 400 mm <sup>2</sup> (flat object)
Lateral resolution	app. 240 μm
Measurement time	typ. 3-15 sec
Evaluation time	typ. 3-10 sec
Standard cycle time	typ. 6-25 sec
Accuracy height map on 100 × 100mm <sup>2</sup>	+/- 10 μm
Accuracy curvature	+/- 10 mD



- Manual or automatic loading
- Semi-automatic or fully automated measuring process
- Production integrated quality control

# Innovations for Automated Optical 3D-Quality Control



## Automation at its best

ISRA VISION has been a leading supplier of high-performance quality inspection, robot guidance and production logistics systems for more than 30 years.

Our systems are used around the world in many different industries and applications. Our mission is to offer a comprehensive portfolio of standard solutions, covering all requirements along the process chain.

ISRA's experience and technological competence in the field of industrial image processing has been proven by thousands of successfully installed systems worldwide.

## Benefits at a glance

Customers opt for ISRA's solutions for the following reasons:

- Our development activities are consistently aligned with our customers' requirements.
- We are continuously expanding our knowledge and expertise in all core areas of industrial image processing.
- Our customer relationships do not end with the delivery of new products. The Customer Support Center provides comprehensive support for the use of your systems and helps you to increase your productivity – be it via our telephone hotline, remote service, on-site service, or our maintenance services.
- More than 900 employees at our sites in Europe, North and South America, and Asia are committed to your success.

## ISRA VISION

Germany  
Tel.: +49 (9131) 977 959 0  
Tel.: +49 (6151) 948 0

Belgium  
Tel.: +49 (2408) 927 00 0

Spain  
Tel.: +34 (93) 839 70 32

France  
Tel.: +33 (0) 1 39 09 32 00

Italy  
Tel.: +39 (02) 61 79 91

UK  
Tel.: +44 (1442) 261 202

USA  
Tel.: +1 (770) 449 77 76

Brazil  
Tel.: +55 (11) 347 611 32

Turkey  
Tel.: +90 (212) 285 97 45

Russia  
Tel.: +7 (921) 055 63 30

P.R. China  
Tel.: +86 (21) 685 002 88

Japan  
Tel.: +81 (45) 534 99 11

Korea  
Tel.: +82 (31) 806 973 00

Taiwan (R.O.C.)  
Tel.: +886 (3) 250 01 48

India  
Tel.: +91 99 33 39 96 42

Optimize your ROI with the technology leader **ISRA**  
[info@isravision.com](mailto:info@isravision.com) [www.isravision.com](http://www.isravision.com)