

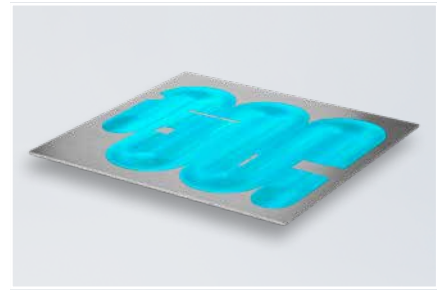
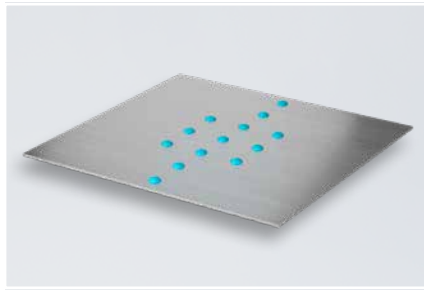
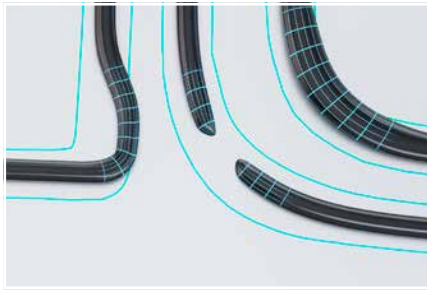
# RTVision

High quality post process  
adhesive inspection for full flexibility

QUISS

ISRA  
VISION

# RTVision – Flexible quality inspection for your industry



Precise applications, high quality, material savings as well as cost reduction – for those factors we offer a flexible solution for industrial dispensing applications – the RTVision.

## Get the maximum out of your system

In automotive manufacturing, reliable adhesive bonds are essential in order to ensure high-quality results. The RTVision is a flexible solution, perfectly adjusted to your individual requirements.

RTVision is the perfect optical inspection solution to validate dispensing processes while catching flaws. This is very important for all manufacturing processes where structural bonding and seam sealing often have large application areas.

The system is also capable of inspecting adhesive dispensing applications, like those in flat stream applications or dot applications for example. Specific algorithms are implemented to check the continuity of the outer contours as well as gaps within all different dispensing applications. These are essential parameters in order to ensure reliable sealing and safety critical bonds.

$\pm 0.1$   
mm

Repeatability in position

$\pm 0.1$   
mm

Repeatability in width

$\pm 0.5$   
mm

Repeatability in gaps



Smart system hardware with low installation and commissioning efforts

Working distance from 400 mm to 1200 mm for flexible set-ups

Separate camera and light panel for individual combinations

Off-line solution for downstream quality inspection



Protection Classification IP 54 to DIN EN 60529  
Risk group 0 according to DIN EN 62471

# Individual system set-up

## Tailored to your needs

The RTVision consists of two main components that may be combined individually depending on your process demands. The high-performance color camera takes pictures of the application while the LED light panel provides strong light impulses for best contrasting quality. This is how quality issues can be detected stable independent from the system environment.

Adjusted to the requirements a homogeneously illuminated color image is generated by using a diffuse or polarized white illumination. To ensure a good reproducible adhesive bead detection, a downstream weighting of the image's color channels is done to optimize the contrast of the image.

Ambient conditions such as spatial circumstances or daylight influence do not compromise the flexible solution. The hardware can be integrated in every assembly line very easily due to its lean system topology and smart cabling concept.

## Reliable and precise results

Even the most precise dispensing application can have inaccuracies. The RTVision helps to detect errors in width, position, and unwanted application gaps in the required resolution. By monitoring these parameters, a high-quality bead as well as material and cost savings can be achieved.



CE  
Protection Classification  
IP 54 to DIN EN 60529



## Reliable bead inspection

The RTVision software analyzes the application images taken by the camera and checks if the bead width and position are within tolerance and the bead is continuously applied without gaps.

RTVision software comes with an intuitive UI with different functional dialogs to fulfill all operator requirements in the production environment.

## RTVision: Various system layout options for your full flexibility

To meet specific process demands, there are various system set-ups for every customer need:

### Multi-system installation

To cover large application parts



### Pedestal mounted

Robot presents part with application



### Robot mounted system

Car part on carrier



### RTV Camera V3 – Technical specifications



Dimension	ø41 x 110 mm
Weight	170g
Operating voltage	24VDC or POE
Speed	1,6MP: 71 Hz (1440 x 1080 px) 5,0MP: 22 Hz (2448 x 2048 px)
Standard field of view	260x170 mm

### QLP Illumination V3 – Technical specifications



Dimension	290x203x95 mm
Weight	2380g
Operating voltage	24VDC
Speed	5 Hz

# Innovations for robot-based automation

## Automation at the highest level

ISRA VISION has been a leading provider of high-performance quality inspection, robot guidance, and manufacturing logistics for more than 30 years. The portfolio expansion with the proven QUISS inspection systems provides you with perfectly aligned automation solutions across the complete process chain.

Already globally proven, innovative QUISS technologies ensure seamless quality assurance and unleash significant potential for greater efficiency in assembly processes - while delivering a quickly realizable return on investment.

Our solutions consistently align with the requirements of our customers. We also support you after delivery with seamless support for service and maintenance so that the utilization of your systems and equipment sustainably increases productivity.

At our facilities in Europe, North and South America, and Asia, more than 900 employees are committed to your success.

## QUISS - the expert for adhesive bead inspection

The combined portfolio of ISRA and QUISS complements each other perfectly. QUISS has a distinctive competence in the automotive sector as an expert for adhesive bead inspection, regardless of the adhesive or surface type. Customers prefer QUISS systems for the following reasons:

- Our systems are deployed by all the world's leading vehicle manufacturers, with over 5,000 systems running in the adhesive bead inspection application. More than 100,000 km of adhesive beads per day are inspected by the systems.
- With our RTVision product family, we offer a solution for all inspection tasks during or after the adhesive application. The system can be installed in all production areas from the press shop to final assembly and across all applications - offering automation and quality assurance from a single source.
- The systems can be individually tailored to your application. You will achieve a return on investment within one year on average.



Headquarter:

ISRA VISION GmbH

Industriestraße 14, 64297 Darmstadt, Deutschland

Tel: +49 6151 948-0

info@isravisoin.com

[www.isravisoin.com](http://www.isravisoin.com)

